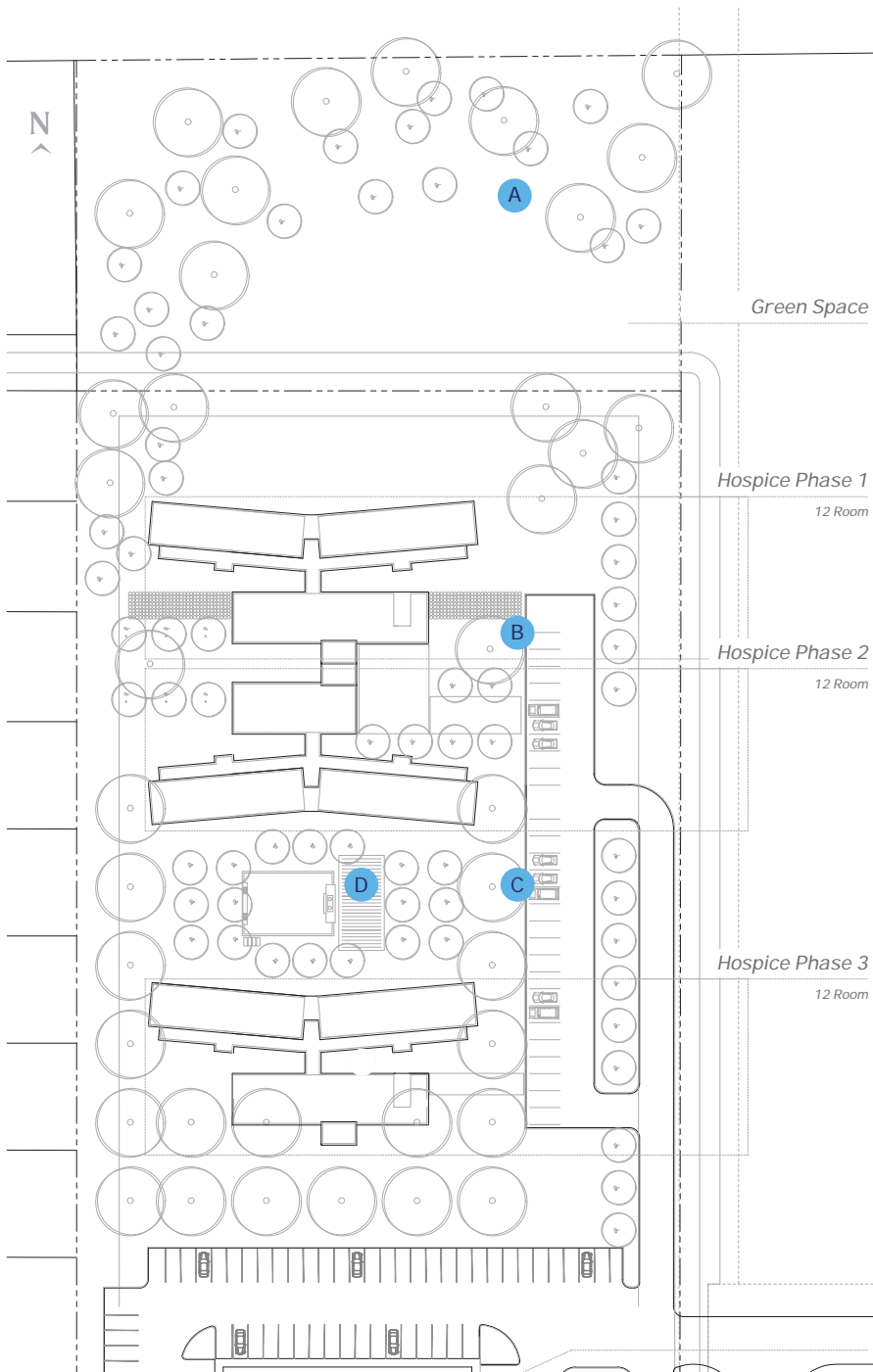


Hospice Care Facility

Bethesda Foundation has a vision to provide enhanced palliative care services to Steinbach and area. We want to create a peaceful, home-like environment, with private rooms for patient dignity, and space for families to gather. The population over the age of 75 in Steinbach and area is expected to grow by nearly 25% in the next

four years. Some of these residents will be in need of acute or long-term palliative care. This type of care is currently provided by the regional hospital, and we believe using a different mix of staff and volunteers there would be some significant cost savings.



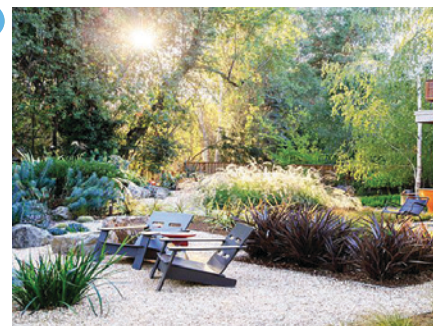
A



B



C



D



*Conceptual sketch shown, subject to change.



